

**We power around 4,000 homes with the gas generated on site.**

Nick, Landfill Operations Manager

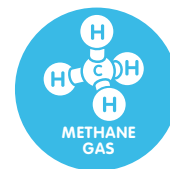


Landfill gas is a natural by-product of decomposing waste. By increasing our capacity to capture landfill gas at the site, we not only reduce the potential for odour, but also convert it into renewable energy.

The collection of landfill gas happens through a well network that extracts the gas and then transports it via a flowline to our on-site Biogas energy plant. Once inside the plant, the landfill gas is used to power generators that produce electricity that is fed straight back into the local electricity grid – powering around 4,000 homes.



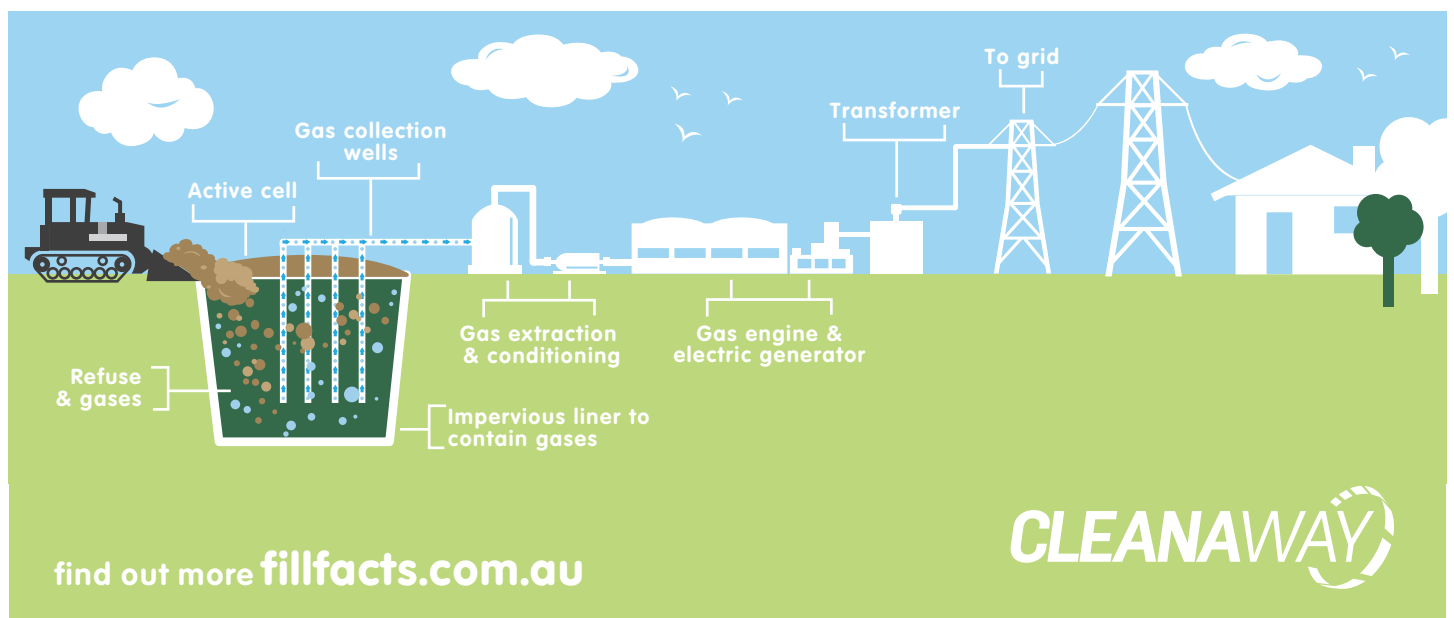
At the Melbourne Regional Landfill we're expanding our ability to capture gas on site to maximize the amount of renewable energy we can feed back into the local grid.



The gas produced at landfills like the Melbourne Regional Landfill is made up of about 50% methane – the major component of the natural gas used at home – and about 50% carbon dioxide.



We continue to tackle climate change by reducing our greenhouse emissions through the responsible management of our landfill gas, and by assisting our customers and the community in managing their waste impacts.



find out more [fillfacts.com.au](http://fillfacts.com.au)

